

# 1.5m<sup>3</sup> and 3.0m<sup>3</sup> FRONT LIFT LIDS

# Industrial Bin Lids

## Design

- Reinforced hinge for added strength and durability
- Diagonal ribbing for optimum strength when the lid stay is in place
- Symmetrical design for maximum all over strength
- Three lid stay positions available that suit a through bolt or an M12 nut
- Finger grips on the front for safe, easy handling
- Water drainage holes and run off channels prevent water ingress
- Nesting ribs allow lids to be securely stacked for transport
- Locking nuts and locking bar channel allow the lid to be easily secured

## Material

- High quality materials
- Long service life
- Advanced manufacturing processes
- Polymer components
  - Rotational moulded from LLDPE
  - Resistant to decay, frost, heat and chemicals
  - UV stabilisation provides excellent ageing characteristics
- Corrosion resistant components
  - M8 lock nuts
  - M12 optional stay nuts
- All components are recyclable

## Colours

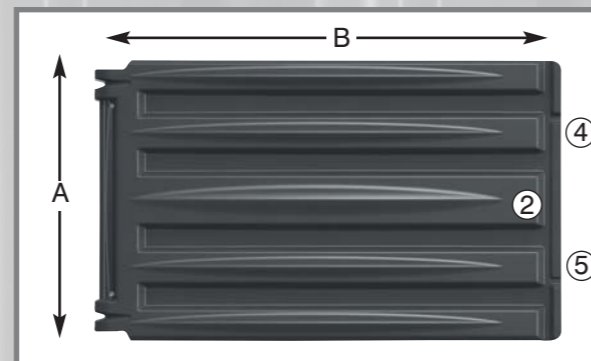
- Standard colours: black, grey, blue, green, yellow, red
- Special colours are available upon request

## Imprints & Markings

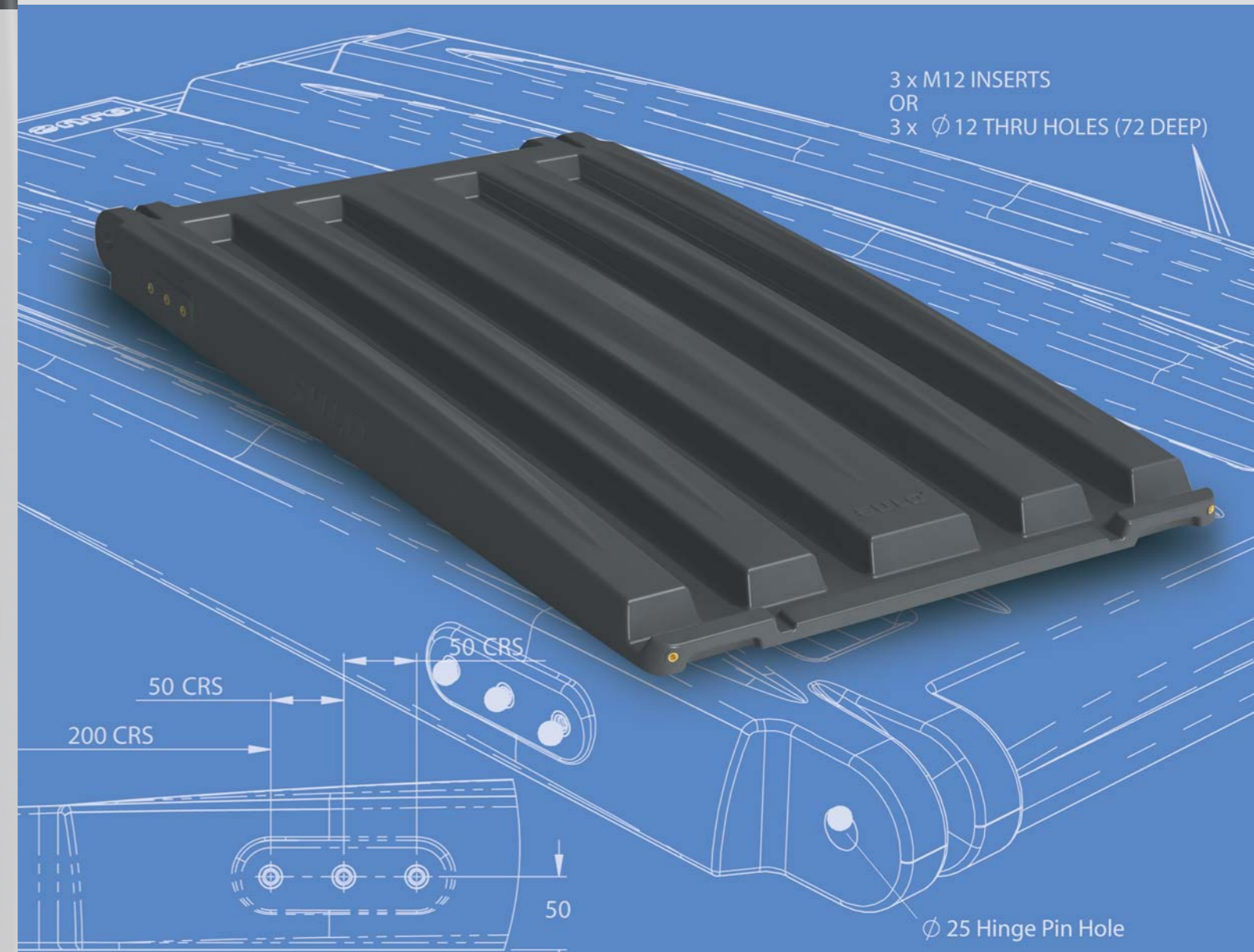
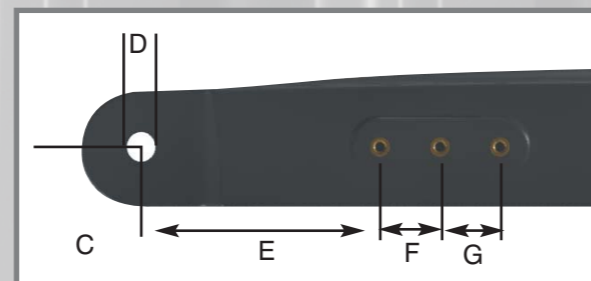
- Manufacturers markings (year, month, day, shift and place of manufacture, mould number, material and manufacturers name).
- Individual markings are available with the option of three in mould positions.
  - ② 118 x 81mm
  - ④ 220 x 25mm
  - ⑤ 220 x 25mm

## Dimensions

<b>1.5 Metre</b>	<b>3.0 Metre</b>
A - 915mm	A - 915mm
B - 1055mm	B - 1520mm



- Hinge and Lid stay positions
- |               |           |          |
|---------------|-----------|----------|
| C - 50 / 50mm | E - 200mm | G - 50mm |
| D - Ø 25mm    | F - 50mm  |          |



# SULO industrial bin lids

## Moulded in signage

The lid features a permanent reminder to "KEEP LID CLOSED AT ALL TIMES" which can help prevent damage from prolonged opening.

## Long service life

A strong frame combined with long continuous ribs and built in strength ensures the lid will have a long service life.

## Reinforced lid stay

The enclosed area surrounding each lid stay is double ribbed and provides extra strength to all three positions.

## Stacking Rib

The unique lid design incorporates special nesting ribs to ensure lids are safe and secure when stacked for storage and transport.

## Reinforced hinge

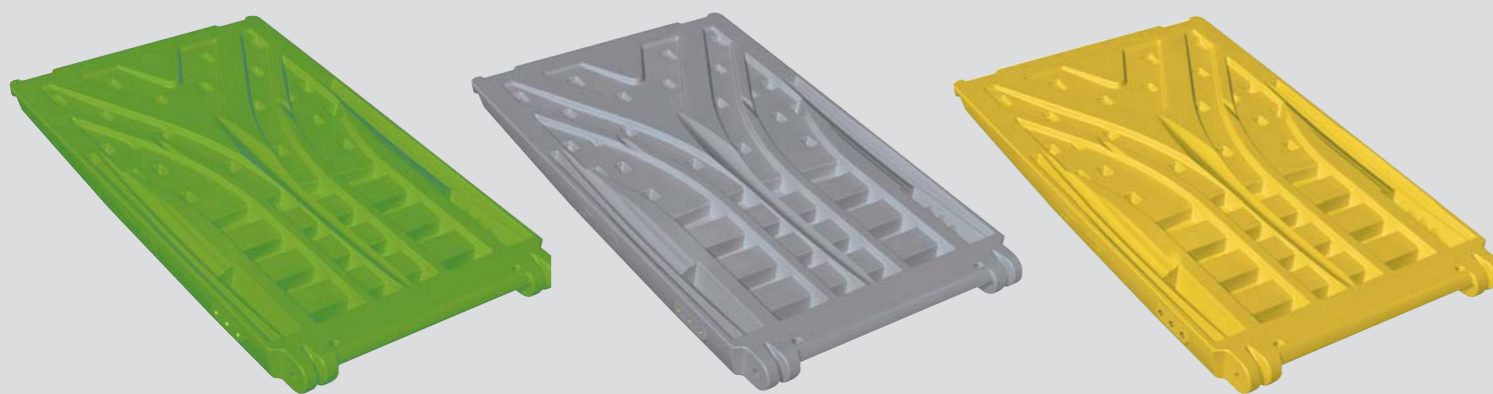
A specially designed dual hinge area provides maximum strength and durability.

## Drainage hole

The lid features two drainage holes at the rear to allow for rainwater runoff.

## Hinge bar support area

A unique reinforced area runs across the back of the lid providing additional support to the hinge bar.



# An evolution in waste collection technology

## Unique design

Durable and attractive the lid has been specially designed in Australia for Australian conditions.

## Robust hinge

The durable hinge area has been uniquely designed for maximum strength.

## Profile

The convex profile channels rain water away from the bin. Additional drainage channels at the front of the lid along with drainage holes at the rear help prevent water entering the bin. Angled sides assist to reposition the lids after emptying and prevent overlapping.

## Lid stay

Three positions are permanently available for the attachment of a lid stay, using a through bolt. The lid can also be custom moulded with M12 nut inserts in any or all three positions.

## Locking bar channel

A specially designed channel runs across the front of the lid that securely houses a locking bar.

## Locking nut

An M8 nut is moulded into the front of the lid on both sides to allow for a locking chain.

## Customised name plates

The lid features three name plate positions that can be customised to suit any requirement.



## Finger grip

Finger grips located at the front of the lid on both sides ensure it is user friendly and prevents jamming of fingers.

