

**STANDARD CLINICAL CONTAINERS:
WITH LOCKABLE & FOOT OPERATED PEDAL POST™ OPTIONS**



**EASY HANDLING
ROBUST PRACTICAL DESIGN
MULTIPLE APPLICATIONS**

Large waste solutions

- Available in 70 litre and 110 litre
- Moulded handles
- Multiple purpose container



Small waste solutions

- Available in 35 litre and 50 litre
- Optional locking bar for easy handling
- Compact shape



Pedal post

- Optional pedal post for hands free sanitary use
- Industrial grade foot pedal
- Lightweight
- Tight fitting overlapping lid with locking handle
- Easily manoeuvred with optional castors
- Colour coded for clinical and other waste streams
- Eliminates risks of infection and contamination
- Available in green and yellow, 35 and 50 litre only



STANDARD CLINICAL CONTAINERS

Material

- **Polymer components:**
 - Injection moulded from specially designed HDPE
 - Resistant to decay, frost, heat and chemicals
 - Special UV-stabilisation provides excellent ageing characteristics
- Corrosion resistant metal components
- **Long service life:**
 - High quality materials
 - Most advanced manufacturing processes
 - Withstands exposure to high mechanical stress levels
- **Recycling:**
 - All container parts are recyclable

Advantages

- Assists with reduction in waste costs
- **Easy handling:**
 - Practical moulded handles
 - Hinged lid
 - Grip rail
 - Lightweight
 - Space saving
 - Easy and hygienic to empty

Imprints and markings

- Manufacturer, year of manufacture, material
- Individual markings with imprints or adhesive labels are available on request*

Colours

- Standard colours
 - 35 litre and 50 litre: Green, Yellow and Purple
 - 70 litre and 110 litre: Dark Grey
- Special colours are available on request*
- All additives are cadmium free and environmentally friendly



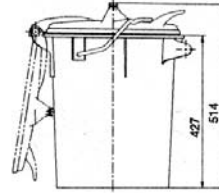
SULO MGB Australia Pty Ltd
123 Wisemans Ferry Road
Somersby NSW 2250
Australia
Tel: +61 (0) 2 - 4348 8188
Fax: +61 (0) 2 - 4348 8128
Internet: www.sulo.com.au
E-mail: info@sulo.com.au

SULO – Queensland Office
11 Argon Street
Sumner Park QLD 4074
Australia
Tel: +61 (0) 7 - 3725 5000
Fax: +61 (0) 7 - 3725 5099

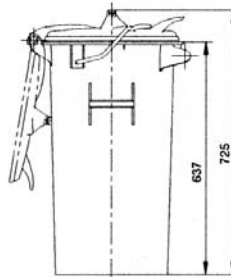
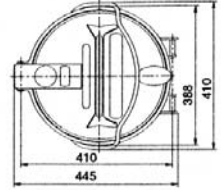
Dimensions - Weights - Standards

Nominal Volume	35ltr	50ltr	70ltr	110ltr
Net weight	2.4kg	3.1kg	4.2kg	6.2kg
Permitted total weight (To be used with automatic lifter)	20kg	30kg	40kg	60kg

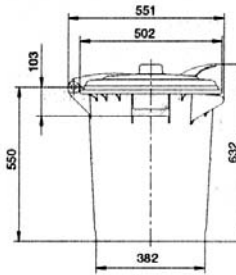
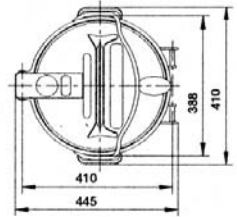
Measurements to be used as a guide only, variations may occur



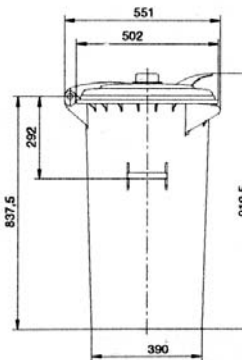
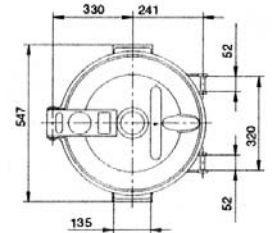
35L



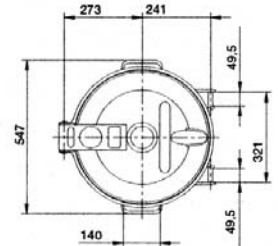
50L



70L



110L



Note: Certification and Quality Marks depicted in this brochure are registered to SULO Umwelttechnik GmbH & Co. KG

SULO – Victorian Office
1950 Hume Hwy
Campbellfield VIC 3061
Australia
Tel: +61 (0) 3 - 9357 7320
Fax: +61 (0) 3 - 9357 7340

SULO - New Zealand
PO Box 58 962
Greenmount, Manukau City 2141
New Zealand
Tel: +64 9 - 968 2180
Fax: +64 9 - 968 2188